



SERVICE LETTER

SL0006

Rev New

Page 1 / 12

EFFECTIVE DATE: This SERVICE LETTER is effective March 1, 2019

SUBJECT: Conversion From Seaplane Configuration to Land Configuration

MODELS AFFECTED: CC18-180 S/N 0001 AND ON

COMPLIANCE TIME: *NO REQUIRED COMPLIANCE TIME*

PURPOSE: This Service Letter provides instruction to remove WIPAIRE 2100 floats and install the landing gear assembly to convert CC18-180 aircraft from seaplane configuration to a land configuration.

PARTS LIST:

Item	PARTS	DESCRIPTION	QTY
1	VP1001(Goodyear 8.50x6-6) or VP1003(Goodyear 26 x 10.5 x 6)	Main Wheels	2
2	VP4007-001(Scott 3200) or VP4009-001(ABI3200)	Tail Wheel	1
3	102731-02/TC6150-003	Decorative Cover	1
4	TC9220-001	Fabric Patch	1
5	VP2031-005	Finishing Plug - Locking, Unvented (7/16" ID)	4
Bill of Materials (Landing Gear Assembly)			
6	TC4000	Landing gear assembly	—
7	101420-01	Lower Shock Strut Assembly	2
8	101435-01	End Plate	4
9	101436-01	Shock Cord Cover Assembly	2
10	101440-01	Shock Strut Assembly	2
11	AN3-5A	Bolt	1
12	AN310-6	Nut	8
13	AN365-1032A	Nut, Nylon Lock	1
14	AN365-428A	Nut, Nylon Lock	12
15	AN365-524A	Nut, Nylon Lock	4



SERVICE LETTER

SL0006

Rev New

Page 2 / 12

16	AN380-3-3	Cotter Pin, 3/32" Dia, .75 L	8
17	AN380-4-8	Cotter Pin	2
18	AN4-6A	Bolt	12
19	AN5-13A	Bolt	2
20	AN5-20A	Bolt	2
21	AN526C832R6--00	Truss Head Screw, 8-32 X 3/8 SS	6
22	AN6-17	Bolt	2
23	AN6-20	Bolt	2
24	AN6-22	Bolt	OPT
25	AN6-26	Bolt	3
26	AN6-27	Bolt	OPT
27	AN6-30	Bolt	OPT
28	AN936-A8	Lock Washer #8	6
29	AN960-10	Washer, No. 10, .063 Thk	2
30	AN960-416	Washer, 1/4, .063 Thk	24
31	AN960-516	Washer, 5/16, .063 Thk	4
32	AN960-616	Washer, 3/8, .063 Thk	29
33	AN960-616L	Washer	2
34	AN960-8L	Washer	6
35	C81903-03	Entrance/Passenger Step Assembly	1
36	HDW-S4R.25TA	Sheet Metal Screw, #4 Thread, .25", Stainless	48
37	MS20995C32--00	SS Safety Wire .032	AR
38	MS35489-22	Grommet Tear Drop, Upper, Hydrasorb	2
39	MS35489-23	Grommet Tear Drop, Lower,	2



SERVICE LETTER

SL0006

Rev New

Page 3 / 12

		Hydrasorb	
40	RM1071-006	Cable Ties, 12", Black	AR
41	RM6000-002	M6000-A-XXXXX Hose (.25 in I.D.)	AR
42	RM8132-001	Grease (MIL-PRF-81322)	AR
43	TC10015-001	Covered Landing Gear, LH	1
44	TC10015-002	Covered Landing Gear, RH	1
45	TC4001-001	Axle Nut	2
46	TC4006-001	Cabane Vee Assembly	1
47	TC4012-001	Hub Cap	2
48	TC4020-001	Lower Safety Cable Assembly	OPT
49	TC4030-001	Upper Safety Cable Assembly	OPT
50	VP1001-001	8:50x6 Tire (6 Ply)	2
51	VP1001-003	8:50-6 6 Ply Tire	ALT
52	VP1003-001	26 inch Tundra Tire (26x10.5-6 6-ply)	OPT
53	VP4001-001	90° Steel Male Elbow, 37° Flare	2
54	VP4002-001	Hex Union Fitting, Small, 37° Flare	2
55	VP4004-001	Wheel Assembly, Cleveland	ALT
56	VP4004-005	Wheel Assembly, Alaskan Bushwheel	2
57	VP4005-001	Brake Assembly, Parker-Hannefin, TSO	2
58	VP4008-001	Inner Tube, 8:50x6	2
Bill of Materials (Tail Wheel Assembly)			
59	TC4002	Tail wheel assembly	—
60	123301-01	Tail Spring Clamp	Scott 2-Hole
			ABI 2-Hole
			1
			1



SERVICE LETTER

SL0006

Rev New

Page 4 / 12

61	123302-03	Bushing	1	
62	123302-05	Bushing	1	1
63	123302-09	Bushing		1
64	123305-01	Pawnee Tail Spring 1.75 2-Hole	1	1
65	AN310-3	Nut, 10-32, 3/8", Castellated	2	2
66	AN365-428A	Nut, Nylon Lock	2	2
67	AN365-720A	Nut, Nylon Lock	1	1
68	AN380-2-2	Cotter Pin, 1/16" Dia, .50 L	2	2
69	AN4-16A	Bolt	2	2
70	AN42-B6	Eye Bolt	2	2
71	AN7-17A	Bolt	1	1
72	AN7-21A	Bolt	1	1
73	AN7-26A	Bolt	1	1
74	AN960-10	Washer, No. 10, .063 Thk	2	2
75	AN960-416	Washer, 1/4, .063 Thk	2	2
76	AN960-716	Washer, 7/16, .063 Thk	6	6
77	MS21044N7--00	Nut, Wide Area Lock (Alt P/N MS20365-720A)	2	2
78	VP3239-001	Tailwheel Spring Connector	1	1
79	VP4007-001	Tail Wheel Assembly, Scott 3200 (2-Hole)	1	
80	VP4009-001	Tailwheel Assembly, ABI 3200 (2-Hole)		1



INSTRUCTIONS:

1. Prepare the corresponding drawings, common tools and read all relevant documents before work. Tow the airplane to hangar, refer to AMM 12-20 to drain fuel.
2. Remove electrical components and harness related to floats:
 - 1) Remove the landing gear control panel 21A11000-009(Round or Square). Cover the opening with the decorative cover 102731-02/TC6150-003;
 - 2) Remove the landing gear warning computer 1006831 and the landing gear master warning lights 1008204 (Figure 1); Remove the wire harness 4A11000-014/1006837 if desired^①;



Figure 1: 1- landing gear control panel 21A11000-009, 2- landing gear master warning lights 1008204, 3- landing gear warning computer 1006831)

- 3) Disconnect and remove the harness 4A11000-011 connecting the control panel to the float if desired^①.



Figure 2 (4A11000-011)

- 4) Remove the circuit breakers GEAR PUMP 40A/GEAR SELECT 5A/GEAR ADV 2A (Figure 3) and the hand pump light AN3021-2 (Figure 4) from the instrument panel, install the Finishing Plug VP2031-005;

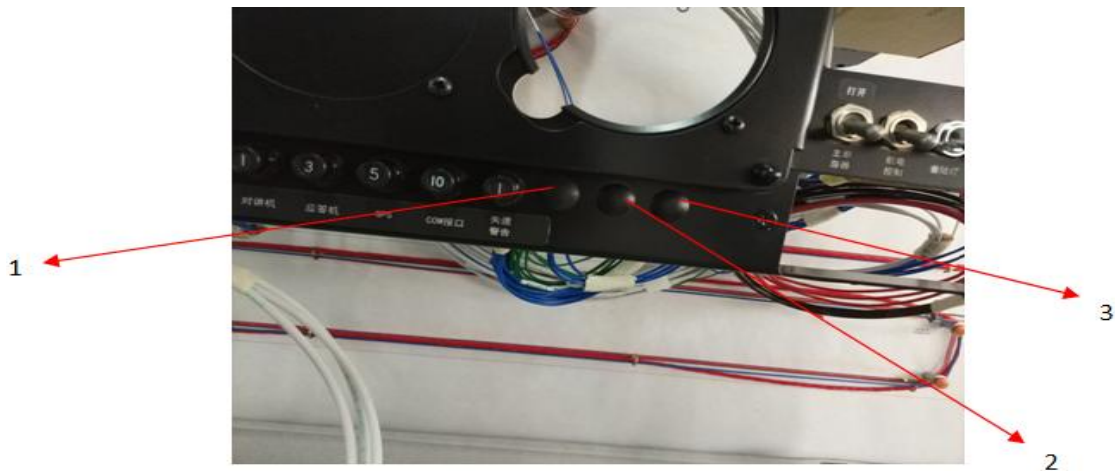


Figure 3

1-GEAR PUMP 40A, 2-GEAR SELECT 5A, 3-GEAR ADV 2A (Finishing Plugs Installed)

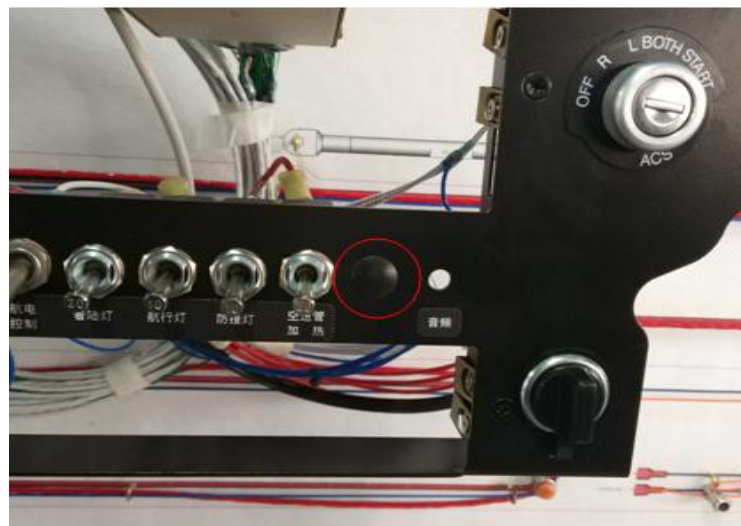


Figure 4 AN3021-2

- (5) Remove the hand pump light SC23005-001 if desired^①.
- (6) Disconnect the left float landing gear control wires (GE1/GE2/GE3/GE4) and right float landing gear control wires (GE5/GE6/GE7/GE8) in the float control box. Remove the harness if desired^①. (Figure 5)

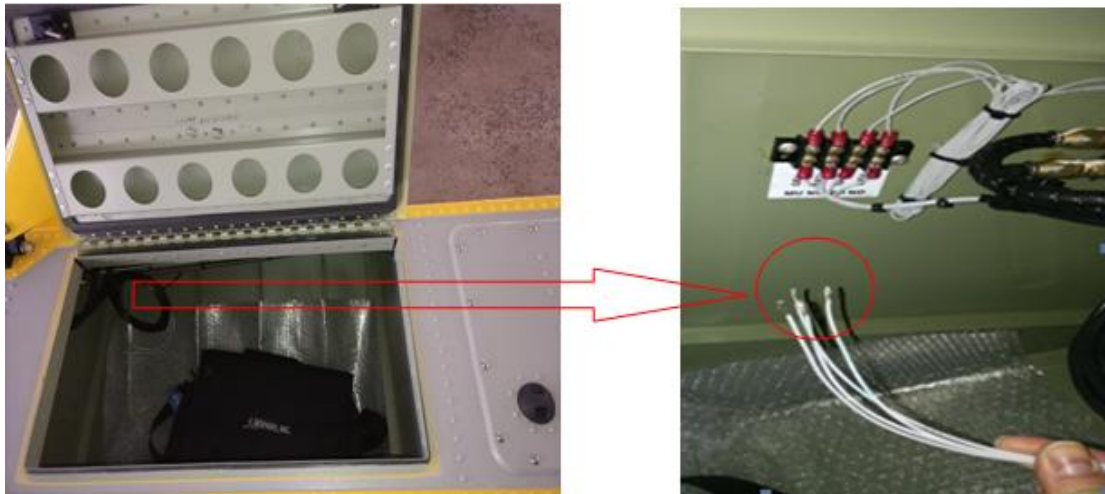


Figure 5 (The left side of float)

- (7) Remove the laser sensor cover plate 1009263, and disconnect the laser sensor plug, then remove the laser sensor, and install the Fabric Patch TC9220-001. Remove the harness 1006836 in the left wing if desired. Disconnect and remove the extension harness 1008202 connecting the harness 1006836 and the landing gear warning computer 1006831 if desired^①. (Figure 6)



Figure 6: 1-1006836, 2-1006831, 3-1009140

- (8) Disconnect the plug 1006816 of the hydraulic pump assembly (21A09000-210), the power wire and the ground wire. Remove the extension harness of TC10201-054, which connects to the landing gear control panel, between the fuselage and the accessory compartment.



Figure 7

3. If an airspeed switch is installed (Reference part number 7481712), see WIPAIRE drawing 1008950. Refer to AMM 57-00 to remove the Front Wing Root Fairing Assembly, Lower Wing Root Fairing, Upper Wing Root Fairing, and Lower Rear Wing Root Fairing Assembly. Disconnect the pitot line between wing and fuselage in the maintenance panel (refer to C12274 / 5 in Figure 8) , remove the 1/4 transparent tube (P610049) and T-joint. Then re-connect the pitot line between wing and fuselage. Reinstall the wing fairings. **Check the pitot system for leak per AMM 34-00.**

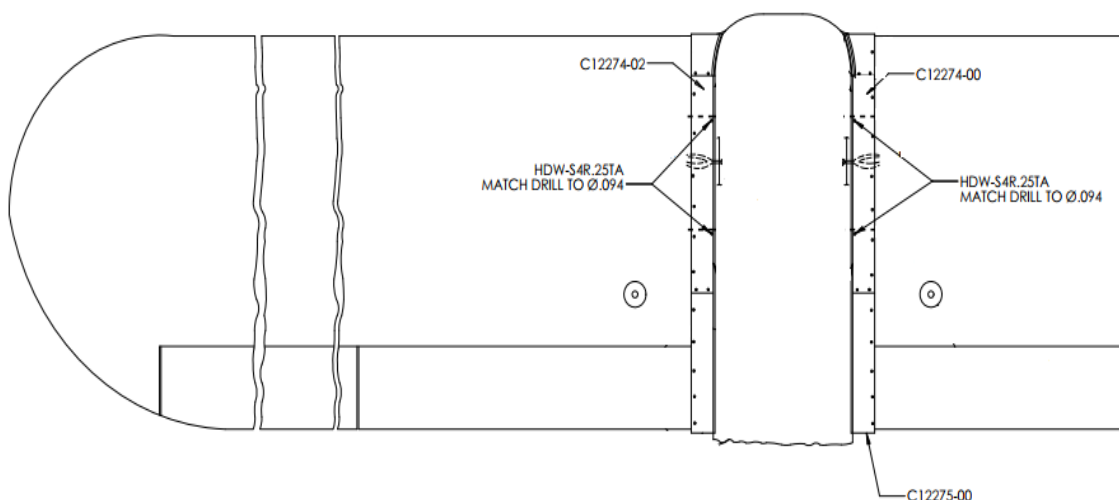


Figure 8

4. Disconnect the hydraulic lines and drain the hydraulic oil, remove the hydraulic pump, hand pump and hydraulic lines if desired[®].
5. Hook the lifting ring (on the wing roots) to a crane (Figure 9). **CAUTION! It is very important to tie down the tail, preventing tipping over (Figure 10).** Lift the plane using the crane to a height such that the tire is just touching the floor.

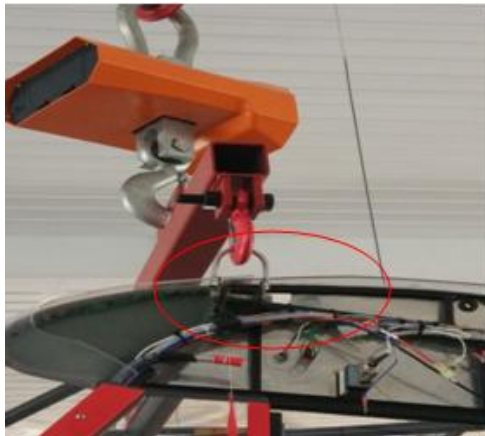


Figure 9



Figure 10

6. Disconnect and remove the hydraulic lines from the floats. Remove the rudder cables from the floats and ventral fin. Confirm that the lifting point and tail tie-down point of the aircraft are firm and secure.
7. Remove the cables between the float struts. Adjust the lifting height as necessary. Remove the connecting bolts and fittings between the float struts and fuselage (Figure 11). Push out the float. According to the requirements of the maintenance

manual of the float manufacturer, clean and store the floats.

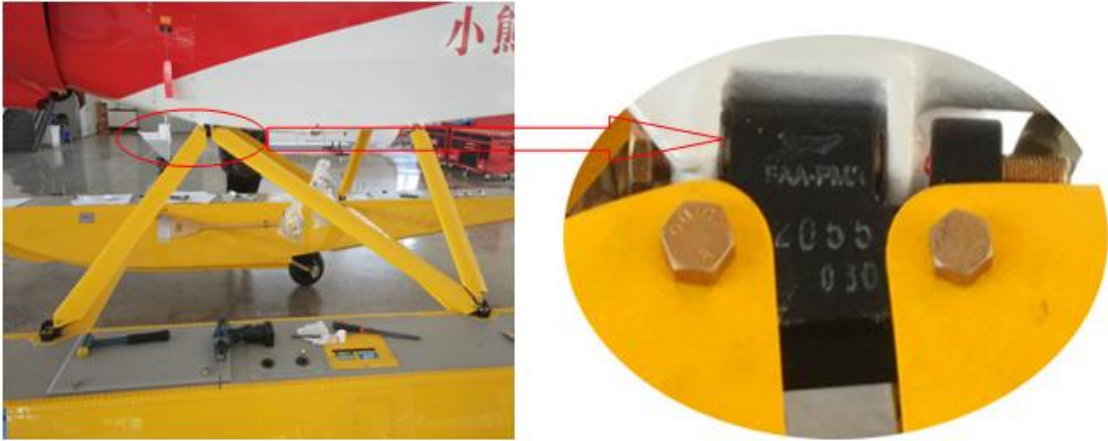


Figure 11

8. Remove ventral fin (Figure 12), clean joints as necessary.

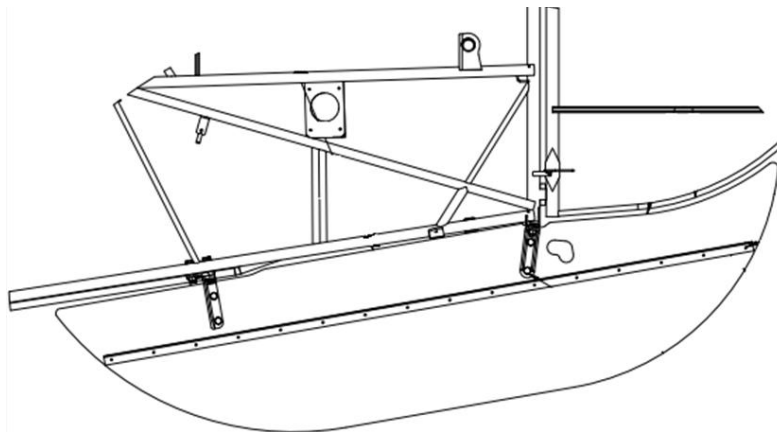


Figure 12

9. Clean the fuselage landing gear connection fittings. Refer to AMM 32-10 to install the main landing gear assembly. Make sure all components are installed and all bolts are tightened to proper torque values. Install the main wheels and inflate the tires per AMM 32-41 and AMM 12-30 respectively. (Figure 13)



Figure 13

10. Refer to AMM 32-42 for brakes installation and inspection.

11. Refer to AMM 32-20 to install the tail wheel assembly. Make sure all components are installed correctly and the torque is correct. Install the tail wheels and inflate the tires per AMM 32-41 and AMM 12-20 respectively. (Figure 14)

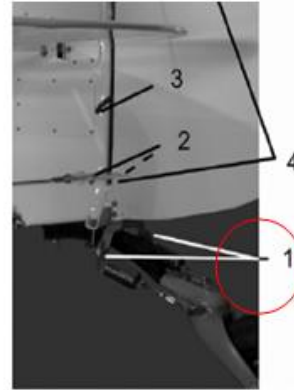


Figure 14

12. Refer to AMM 27-20 install tail wheel turning springs and calibrate the springs



according to section 2 C.(Refer to figure 15)



1 - Springs 2 - Cables 3 - Wiring 4 - Hinge pins

Figure 15

13. Lower the airplane to the floor slowly. Remove the tail tie-down.
14. Refer to AMM 08-00 section 2 for weight and balance. Record the new empty weight and the center of gravity location as required.
15. Record the work done on the Aircraft Log Book as required. Update the list of aircraft instruments if desired.

Note: ① If the owner's desire is to keep the harness in the airframe, the harness should be properly terminated and secured.

② Removal of the hydraulic line requires cutting the fuselage fabric and repairing it. Hydraulic lines can be retained.